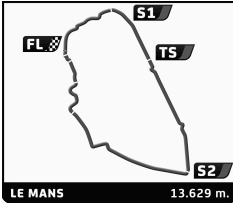




# 30-1/2/3 | 2022

## JUNE-JULY



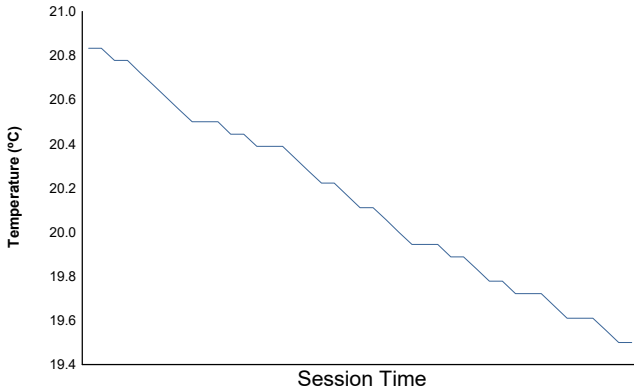
### LE MANS CLASSIC 2022

#### PLATEAU 3 - GRID 3

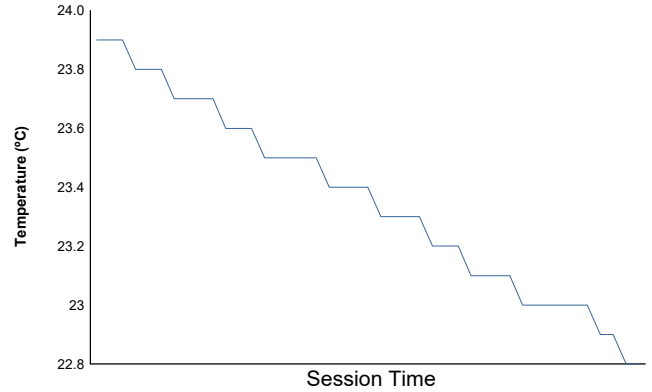
#### RACE 1

### Weather Report

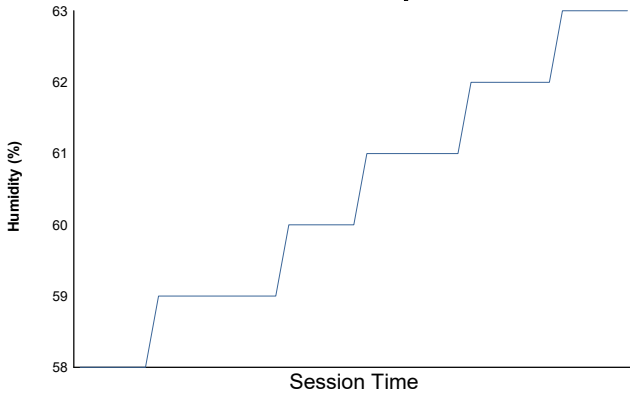
#### Air Temperature



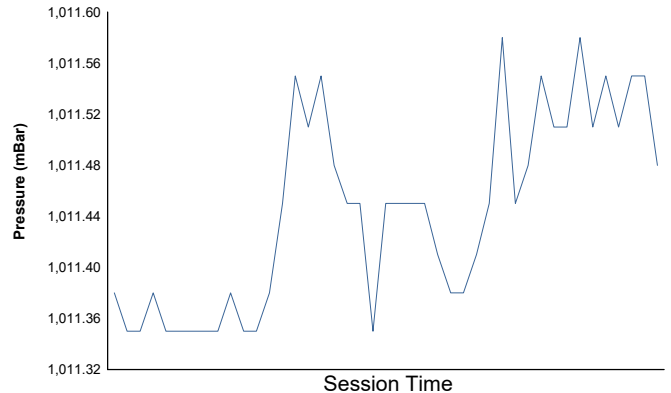
#### Track Temperature



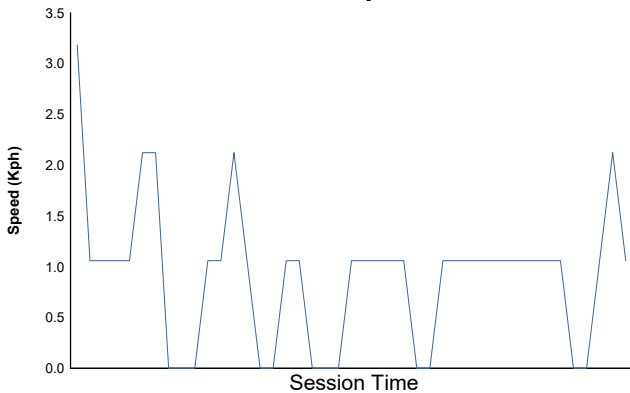
#### Humidity



#### Pressure

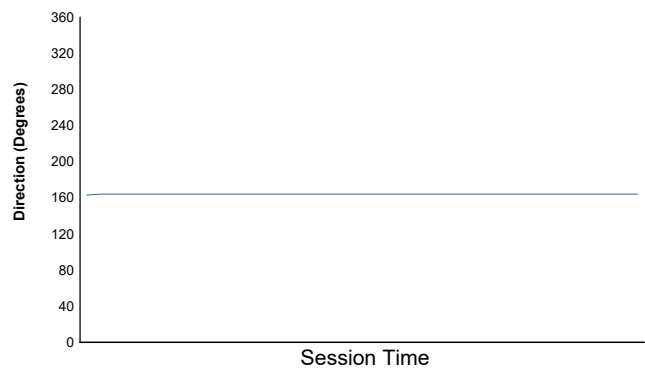


#### Wind Speed



#### Wind direction

North = 0°/360° Est = 90° South = 180° West = 270°



Track Status: **DRY**

