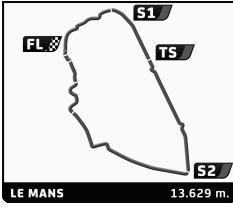




30-1/2/3 | 2022

JUNE-JULY



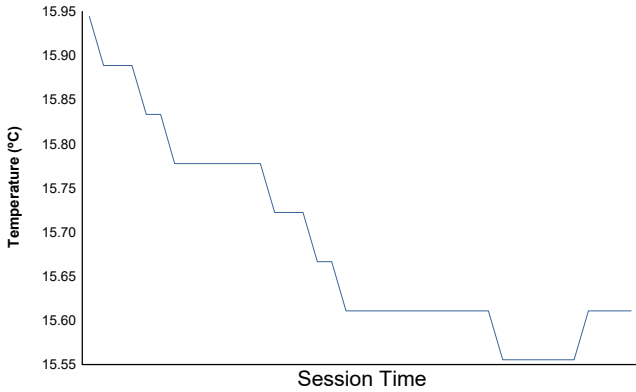
LE MANS CLASSIC 2022

PLATEAU 1 - GRID 1

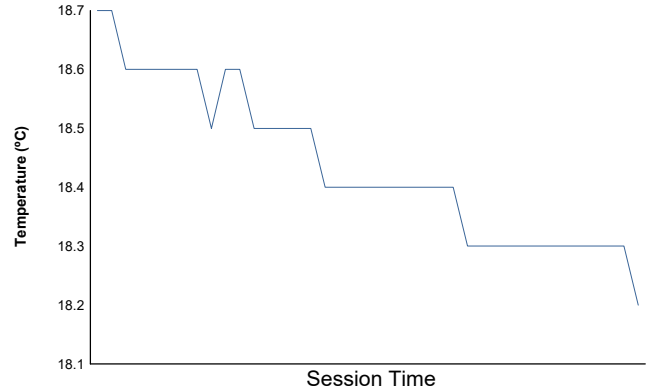
RACE 2

Weather Report

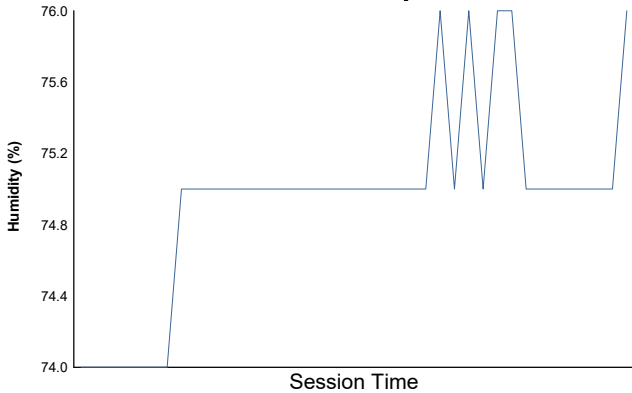
Air Temperature



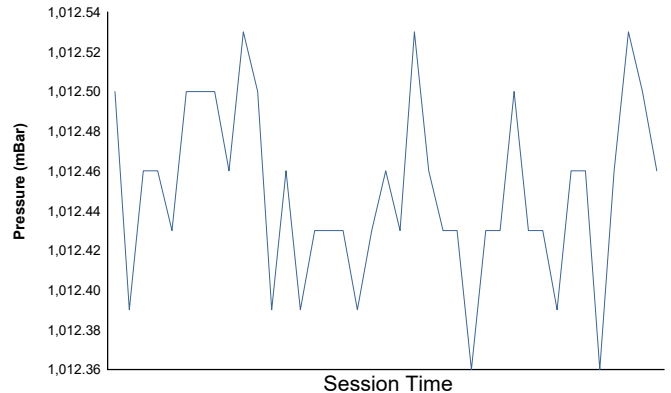
Track Temperature



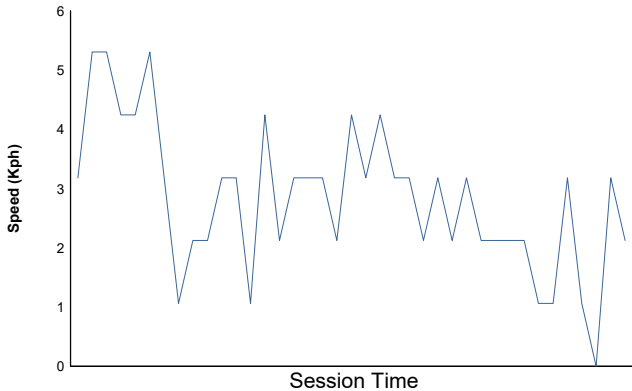
Humidity



Pressure

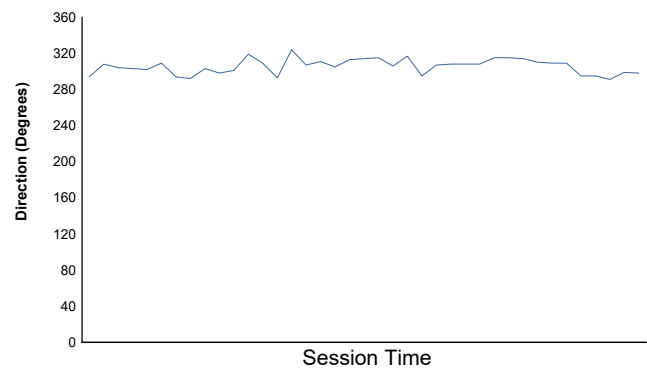


Wind Speed



Wind direction

North = 0°/360° Est = 90° South = 180° West = 270°



Track Status: **DRY**

